

NOTE: 1  
 DESIGN CODE:  
 API 17H

NOTE: 2  
 TECHNICAL CLASSIFICATION:  
 Article Type: 008-Actuation  
 Main Group: 8.03. ISO-6-7 Actuation  
 Intermediate Group: 8.46.03. Gear  
 Sub Group: 8.46.128.02. Intervention

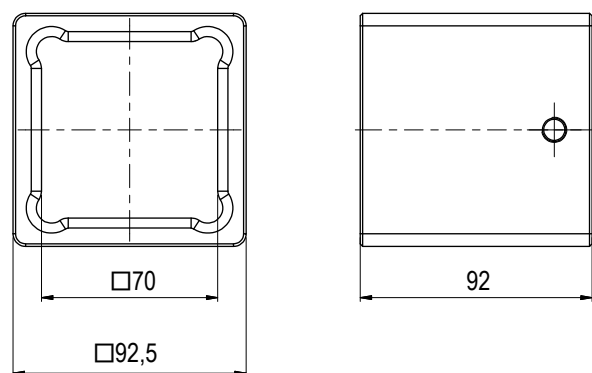
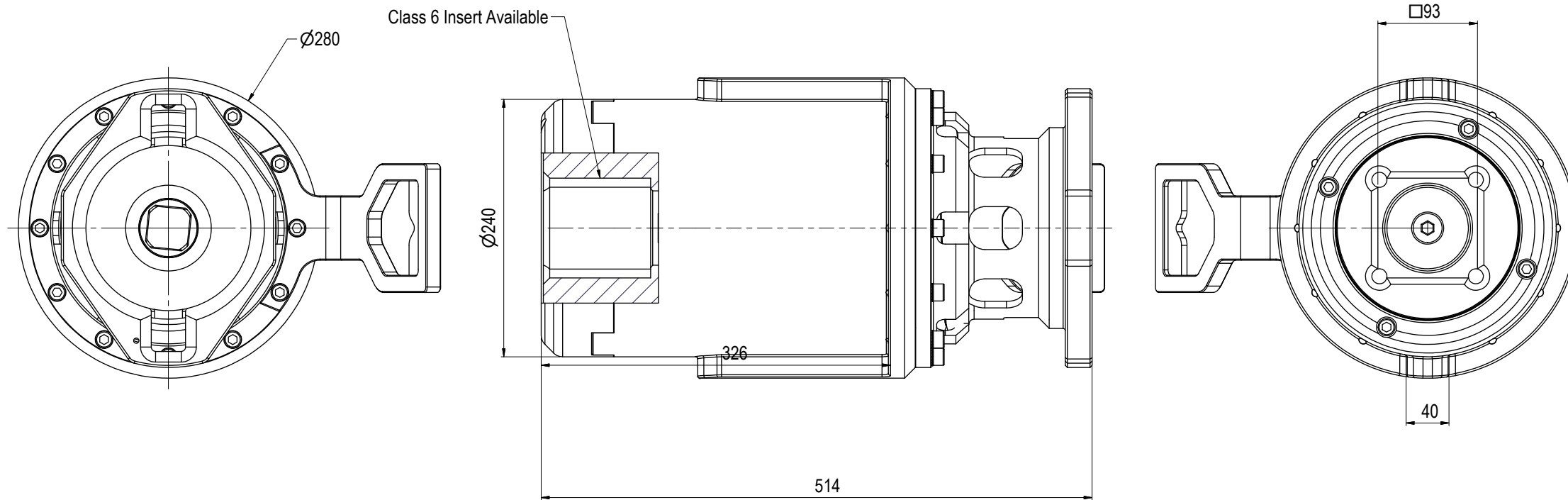
NOTE: 3  
 INTERFACE INFORMATION:  
 Pressure Rating Bar: 300  
 Design Water Depth: 3000m  
 Material: N/A  
 Weight in Air: 61,6 kg  
 Volume: 12,68 dm<sup>3</sup>  
 Submerged Weight: 48,58 kg  
 Surface Area: 26281 cm<sup>2</sup>  
 Hydraulic: N/A  
 Mechanical: ISO Class 4 Input  
 Electrical: N/A  
 Com. & Protocol: N/A

NOTE: 4  
 ADDITIONAL INFORMATION:  
 API 17H Class 4 to 7 gearbox for short term use / intervention.  
 The gearbox is oil filled and pressure compensated using passive, integrated compensator. Main housing constructed in hard anodized Aluminum, nose section in POM and output socket in S165M.

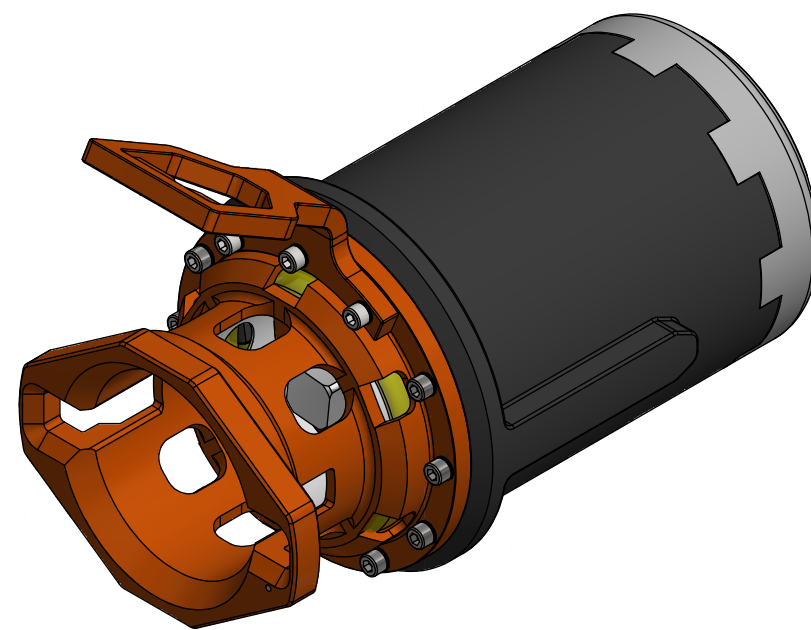
Mechanical Gear box with ISO Class 4 input and ISO Class 7 output. 10kNm torque capacity.  
 Gear Ratio 10kNm 1:3,78

Can be configured to 15kNm and 40kNm torque output.  
 Gear Ratio 15kNm 1:6 (ref BA6847)  
 Gear Ratio 40kNm 1:14.273 (ref BA6403)

Gear Ratio 40kNm Long 1:14.273 (ref BB1677)



CLASS 6 INSERT BB1680



07	11.11.2024	9-IFU (Issued for Use)		WTJ	TAN	WTJ
06	20.9.2023	9-IFU (Issued for Use)		WTJ	LGH	WTJ
05	24.8.2022	9-IFU (Issued for Use)		WTJ	LGH	WTJ
04	11.2.2022	9-IFU (Issued for Use)		WTJ	KHA	WTJ
Rev.	Date	Reason for issue	Revision change	Made	Chk'd	Appr.



Dwg Scale:	NTS
Dwg Proj:	
Dwg Format:	A3

Drawing title:	Class 7 Gear Box 10kNm	
Drawing number:	BA8497	Rev: 07